



Dhanlaxmi
Pigments Pvt. Ltd.

Manufacturer & exporter of
Phthalocyanine Pigments

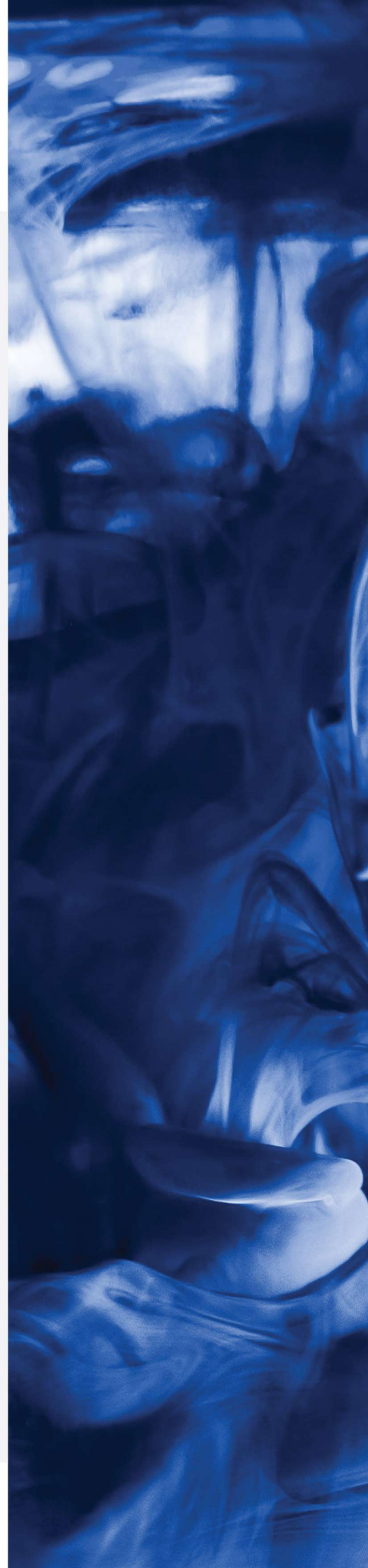
Yash Ramolia

Director, Dhanlaxmi Pigments Pvt. Ltd.

ABOUT US:

Established in 1991, Dhanlaxhmi pigment is one of the noted manufacturers, suppliers and exporters of a wide range of pigments. Processed using quality tested ingredients, and trained expertise, these pigments are widely acclaimed for their non-toxic and safe-to-use attributes.

With the vision of Late Mr. Chatur Ramolia, a noted industrialist and experienced personnel, Dhanlaxhmi has achieved many milestone that





PIGMENT BLUE:

Pigment Blue, belongs to the class of pigments described as “vat pigments”. Blue pigments were originally made from minerals such as lapis lazuli, cobalt and azurite. It is a soft powder with a rich texture, easy to apply also insoluble in water.

CPC Blue Crude

Copper Phthalocyanine Blue Crude

Formula: $C_{32}H_{16}N_8Cu$

Molecular Weight: 576 mg/mol

Physical & Chemical Properties:

This products appears as dark blue powder, which has various forms in different media. It has a bulk density of 0.3g/ccm. With a relatively good chemical stability, it is insoluble in water, soluble in concentrated sulphuric acid, and decomposed in contact with a strong oxidizer.

Specifications:

| | |
|----------------|------------|
| Purity | 98 ± 0.5% |
| Water Solubles | 1% Max. |
| Free Copper | 0.5% Max. |
| Copper Content | 10.5% Min. |
| pH | 7 ± 1 |
| Volatiles | 1% Max. |

Applications:

It is used as raw material in manufacturing:

Pigment Alpha Blue 15.0 & 15.1

Pigment Beta Blue 15.3 & 15.4

Pigment Green 7

Reactive Turquoise Blue 3, 21, 25, 71, 140

Direct Turquoise Blue 86, 199

Packaging:

• HDPE / Fiber / MS Drums

25 kg.

*customized packaging available upon request.



Pigment Beta Blue 15.3 & 15.4

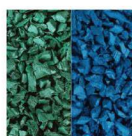
Copper Phthalocyanine Beta Blue

15.3 & 15.4

Specifications:

| | |
|----------------------------|---|
| Chemical Class | Phthalo. Beta Blue |
| C. I. Number | 74160 |
| CA Number | 147 - 14 - 8 |
| Chemical Formula | $C_{32}H_{16}N_8Cu$ |
| Molecular Weight | 576 |
| Specific Gravity | 3.0 to 3.2 |
| Bulk Density (gm/cc) | 0.33 - 0.31 |
| pH | 7 to 8.5 |
| Oil Absorption (ml./100gm) | 42 ± 2 |
| Moisture Content | 0.5 % max. |
| Heat Fastness | 210°C for 10 min. for 15.3 280°C for 10 min for 15.4 |
| Grit Content | 100 ppm max. |
| Water Soluble (Max.) | 0.5% |
| Solvent Stability | Excellent |

Applications:



Rubber



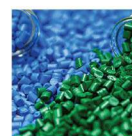
Textile



Inks



Paints



Plastics

Packaging:

- HDPE bags
- Paper bags
- HDPE / Fiber / MS Drums
- Corrugated Box

10 | 20 | 25 kg.

10 | 20 | 25 kg.

25 kg.

10 | 20 | 25 kg.

*customized packaging available upon request.

Pigment Alpha Blue 15.0 & 15.1

Copper Phthalocyanine Alpha Blue

15.0 & 15.1

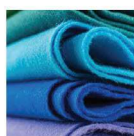
Specifications:

| | |
|----------------------------|---|
| Chemical Class | Phthalo. Alpha Blue |
| C. I. Number | 74160 |
| CA Number | 147 - 14 - 8 |
| Chemical Formula | $C_{32}H_{16}N_8Cu$ |
| Molecular Weight | 576 |
| Specific Gravity | 2.6 to 2.8 |
| Bulk Density (gm/cc) | 0.38 - 0.36 |
| pH | 7 to 8.5 |
| Oil Absorption (ml./100gm) | 42 ± 2 |
| Moisture Content | 0.5 % max. |
| Heat Fastness | 210°C for 10 min. for 15.0 280°C for 10 min for 15.1 |
| Grit Content | 100 ppm max. |
| Water Soluble (Max.) | 0.5% |
| Solvent Stability | Excellent |

Applications:



Rubber



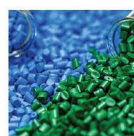
Textile



Inks



Paints



Plastics

Packaging:

- HDPE bags
- Paper bags
- HDPE / Fiber / MS Drums
- Corrugated Box

10 | 20 | 25 kg.

10 | 20 | 25 kg.

25 kg.

10 | 20 | 25 kg.

*customized packaging available upon request.

An abstract, vibrant green ink splash or liquid movement, captured in a high-speed photograph, creating a sense of fluidity and energy. The green is a rich, saturated hue, with lighter, misty areas where the ink disperses, contrasting sharply with the white background.

PIGMENT GREEN:

It is a synthetic green pigment from the group of phthalocyanine , a complex of copper with chlorinated phthalocyanine. It is a soft green powder, which is insoluble in water. It is a bright, high intensity colour.

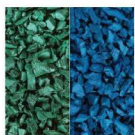
Pigment Green 7

Copper Phthalocyanine Green - 7

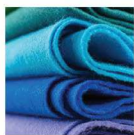
Specifications:

| | |
|----------------------|-------------------------|
| Chemical Class | Phthalo. Green |
| C. I. Number | 74260 |
| CA Number | 1328 - 53 - 6 |
| Chemical Formula | $C_{32}N_8Cl_{14-16}Cu$ |
| Molecular Weight | 1092 to 1127 |
| pH | 7 to 8.5 |
| Moisture Content | 0.5 % max. |
| Water Soluble (Max.) | 0.5% |
| Solvent Stability | Excellent |

Applications:



Rubber



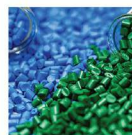
Textile



Inks



Paints



Plastics

Packaging:

- HDPE bags
- Paper bags
- HDPE / Fiber / MS Drums
- Corrugated Box

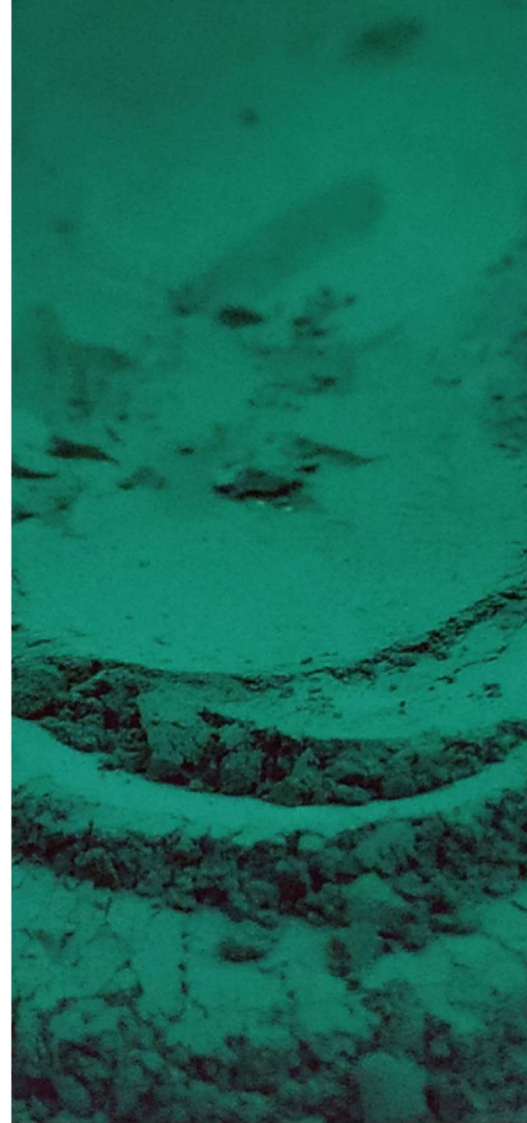
10 | 20 | 25 kg.

10 | 20 | 25 kg.

25 kg.

10 | 20 | 25 kg.

*customized packaging available upon request.



A blue-tinted photograph of an industrial facility, likely a refinery or chemical plant, featuring large storage tanks, pipes, and structural steel. The image is used as a background for the text.

OUR ACCREDITATIONS

We are accredited by standards related to quality management systems as well as environmental management.

We are certified by:

- **ISO 14001:2015 CERTIFIED**
- **ISO 9001:2015 CERTIFIED**

OUR MISSION:

- To become a value based organization and strive at it's fullest by seeking professional excellence.
- To create an excellent work space thus by improving productivity at its best.
- To revere Environment, Health and Safety principles, uphold the dignity of human beings, nurture team spirit and foster leadership through empowerment.

OUR VISION:

- To have a global name, attain customer delight and deliver human service.
- To become the most admired and trusted pigment company.

OUR VALUES:

Our core values are the principles that unite and define Dhanlaxmi way of working in better and efficient way.

- Persist in innovation
 - Commit to customers and colleagues
 - Deliver to trusted result
-



Dhanlaxmi

Pigments Pvt. Ltd.

-
- 📍 Plot no: 3019-20-21, Nr. Gujarat Agro, Phase 3, GIDC, Panoli, Gujarat, India - 394 116
 - ☎ +91 99252 07676 | +91 99252 07679
 - ✉ dhanlaxmipigments@gmail.com
info@dhanlaxmipigments.com
 - 🌐 www.dhanlaxmnigroupofindustries.com
-